



BUTLER & STAG

Hewison Street | Bow
| E3

A beautifully presented one bedroom apartment set on the first floor of this striking modern development occupying a corner position of Hewison Street and the historic Roman Road market.

- One Bedroom • Private Balcony • Vibrant Amenities Close by • Modern Interiors • Dual-Aspect Reception • Well Presented

Offers In Excess Of £340,000 | Leasehold

The property boasts a contemporary finish and a wealth of natural light aided by dual aspect sash windows and impressive high ceilings.

Comprising a generous sized living/entertaining space which is open plan to a sleek modern fitted kitchen and French doors leading to a west facing private Balcony, a double bedroom and stylish bathroom.

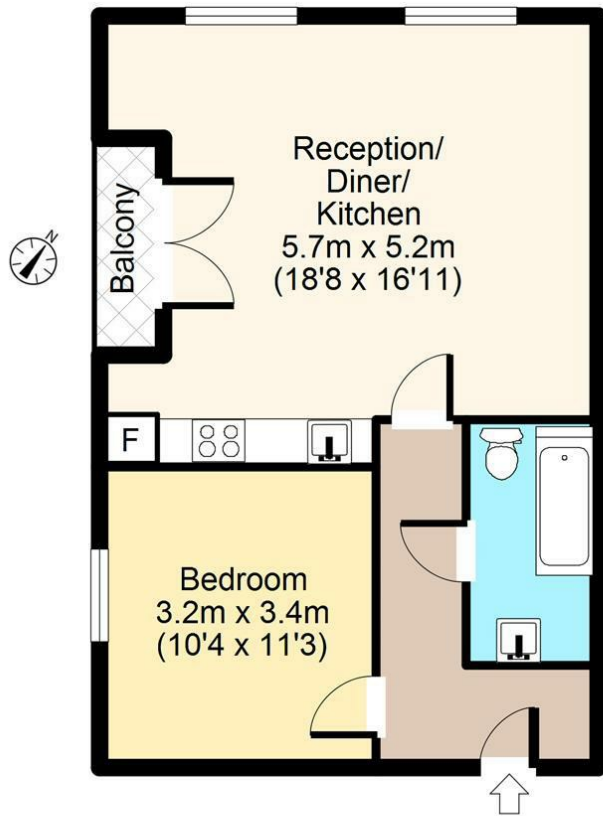
There are excellent bus routes from Roman Road whilst the property is roughly equidistant from Bow Road Underground (District and Hammersmith & City) and Mile End (Central Line).



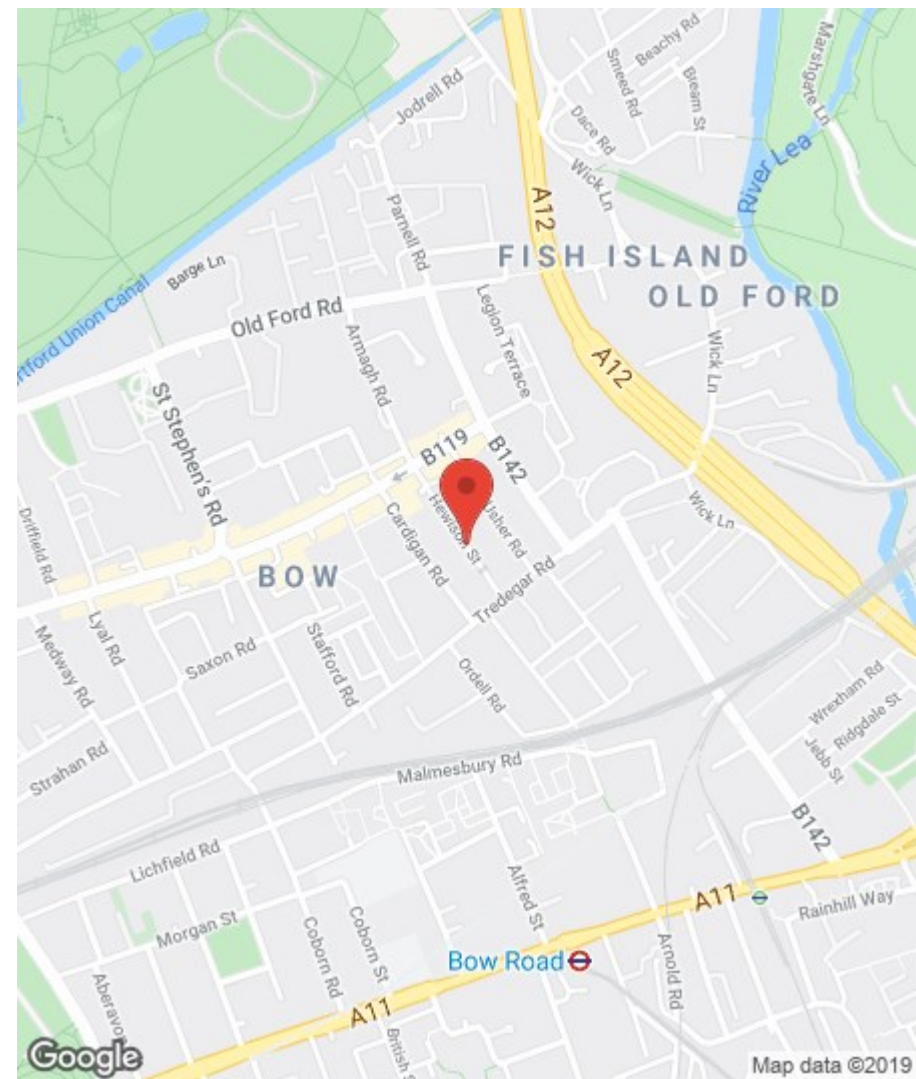


Hewison Street, E3

First Floor



Total area: approx. 48 sq. metres (515 sq. feet)
For illustration purposes only - not to scale
www.londonpropertyassessments.co.uk



BUTLER & STAG

508 Roman Road, Bow, London, E3 5LU | 020 8102 1236 |

bow@butlerandstag.com | www.butlerandstag.uk

Important Notice - These particulars have been prepared in good faith and they are not intended to constitute part of an offer or contract. We have not performed a structural survey on this property and the services, appliances and specific fittings have not been tested. All photographs, measurements, floor plans and distances referred to are given as a guide and should not be relied upon.

Energy Efficiency Rating		Current	Potential
Very energy efficient - lower running costs			
(92 plus) A			
(81-91) B			
(69-80) C			
(55-68) D			
(39-54) E			
(21-38) F			
(1-20) G			
Not energy efficient - higher running costs			
		76	76
England & Wales		EU Directive 2002/91/EC	

Environmental Impact (CO ₂) Rating		Current	Potential
Very environmentally friendly - lower CO ₂ emissions			
(92 plus) A			
(81-91) B			
(69-80) C			
(55-68) D			
(39-54) E			
(21-38) F			
(1-20) G			
Not environmentally friendly - higher CO ₂ emissions			
		79	79
England & Wales		EU Directive 2002/91/EC	